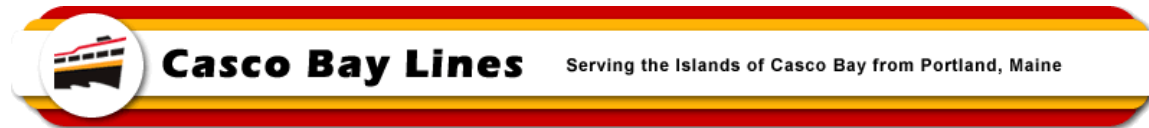


MEMO



TO: File

FROM: Paul D. Pottle, Director of Projects

DATE: December 6, 2024

SUBJECT: Construction Progress Report for MV Battery Steele - #11

This report covers construction at the Senesco Shipyard for the months of October 2024 and November 2024. The shipyard continues to make steady progress on many of the systems, but still is struggling with manpower efforts for certain portions of the work. There was a much bigger push on getting painting started and progressing in a number of areas. Work also progressed on equipment and grating foundation fabrication and installation for various areas throughout the vessel. There was also a focus on getting windows installed so that insulation could begin throughout the vessel. Additional submissions were made to the Coast Guard and some approvals were received. Inspections by the US Coast Guard are ongoing, with no major issues identified as of this writing. The Coast Guard is on site several times per week inspecting work completed since their last visit and signs off on work that meets the standards.

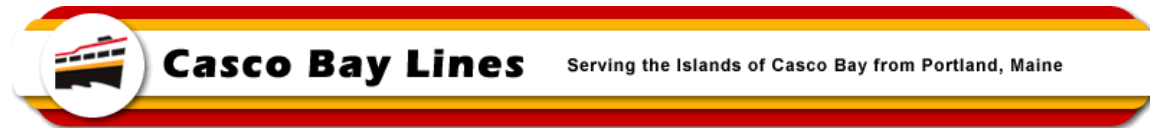
The charger for the vessel arrived in Portland in November and was installed on the pier by CBL's marine contractor, Prock Marine. The installation took about 3 days to complete and was done with no issues. The electrical contractor will begin installing the wiring and contactor cabinet in early December and should complete that work in about two weeks.

Senesco did tell CBL that they would not be able to deliver the vessel in March as previously agreed. CBL staff along with our naval architect inspection firm will meet with Senesco to review progress to date, remaining labor/support issues and try and come to an agreement on what would be a realistic delivery schedule. Continuing to bump the delivery date is not in the best interest of any of the parties. Once a new delivery date has been determined that date will be made public.

The following is a brief overview of the work done from October 1st, 2024 to November 30th 2024:

- Painting throughout the vessel to include, but not limited to the outside decks, superstructure of the vessel, compartments, pilot house, passenger cabins, switchboard rooms, voids, engine room and on various foundation frames and handrail systems.
- Continued installing the NOVEC fire suppression system and system components
- Continued to fabricate, paint and install equipment foundation framing along with the grating floor framing throughout the vessel.
- Began insulation installation in various areas around the vessel
- Finished installing the remaining hatches for the vessel
- Continued to work on and provide production packages to support the construction activities
- Made additional submissions as well as responded in inquiries for the US Coast Guard

MEMO



- US Coast Guard continues to have a presence at the shipyard, inspecting completed work and signing off on areas that have passed the inspection
- Finished installing the rub rails on both the port and starboard sides at the 01 and 02 deck levels
- Started to assemble the exhaust system heat shield
- Installed hydraulic piping in both lazarettes 1 and 2
- Completed the window installation throughout the ferry
- Continued work on handrail installation, painting and screen section installation
- Fabricated battery foundations and have done partial installation
- Worked on removing any excessive deflection in the deck plating
- Started installing wireway and cableway penetrations in the engine room
- CBL took delivery of the new ferry charger and had it installed on the pier in Portland. The electrical contractor will begin doing the final wire installation and hook-ups.

MEMO



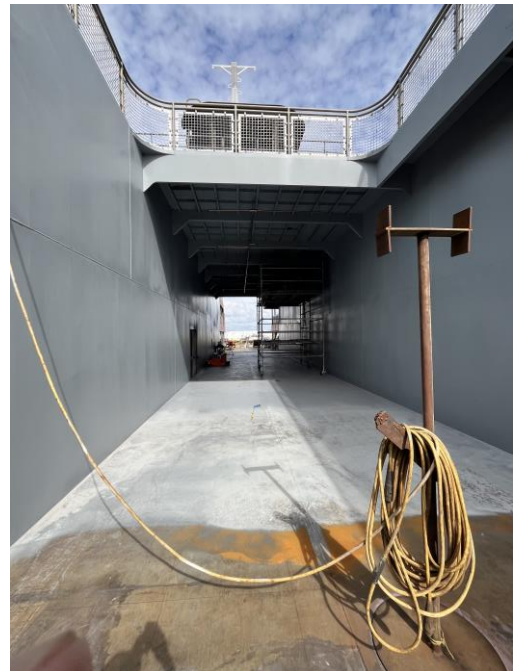
5123 – Installing Sprinkler Shutoff Valves



5132 - Installing Sprinkler Shutoff Valves

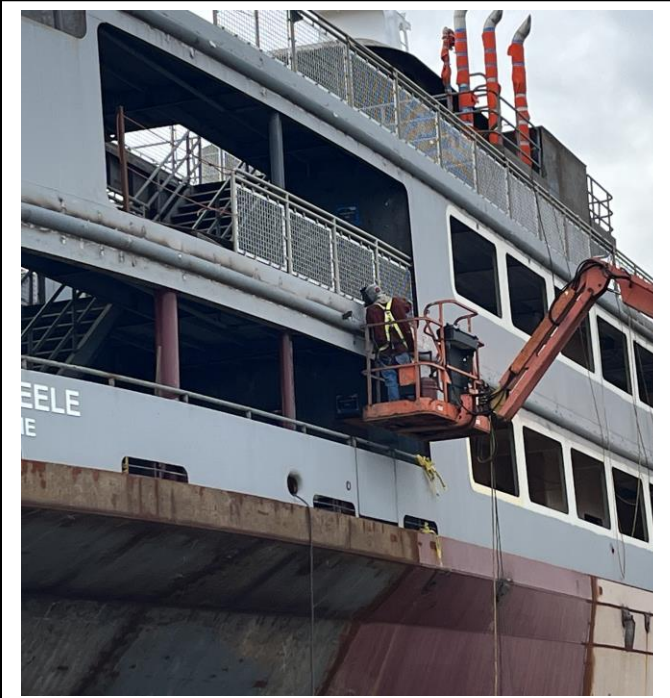
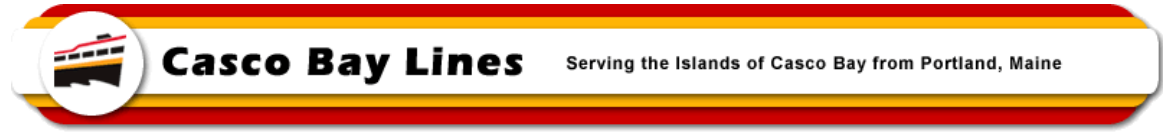


5133 – Fire Suppression piping down vehicle alleyway

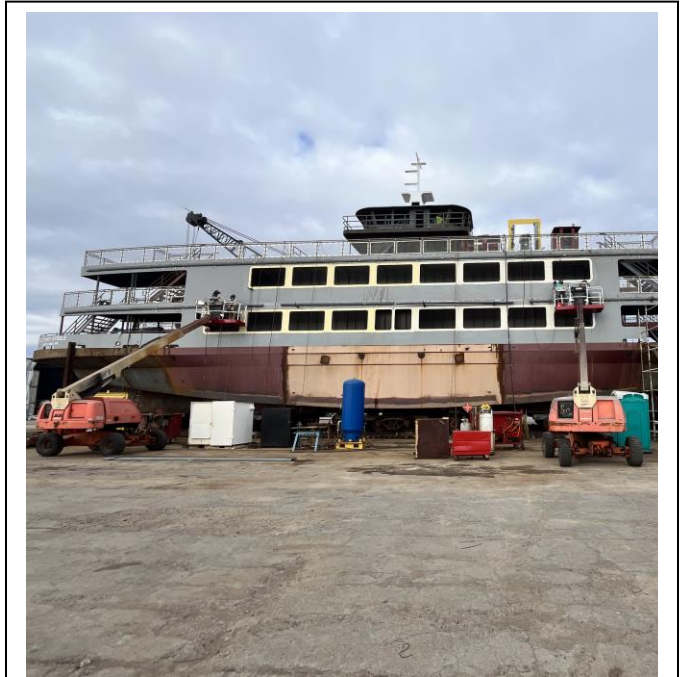


5134 – View down vehicle alleyway partially painted

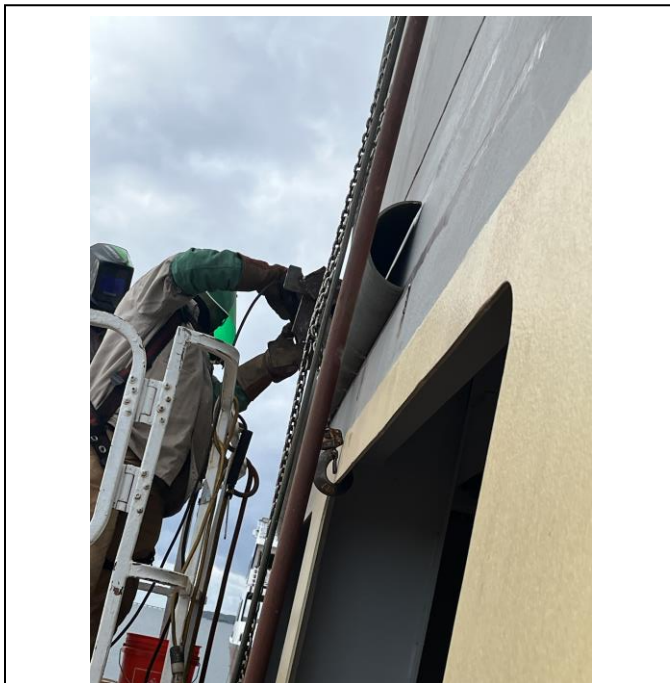
MEMO



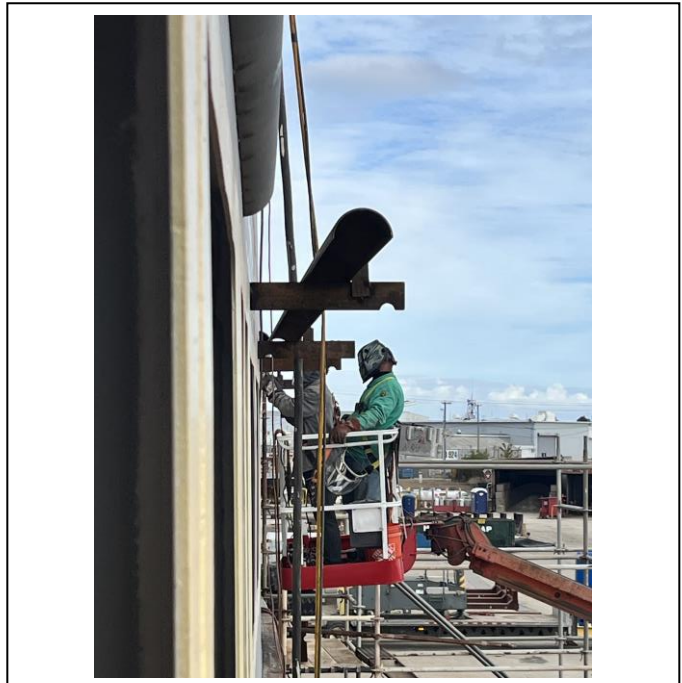
5139 – Installing Deck Guards



5141 - Installing Deck Guards

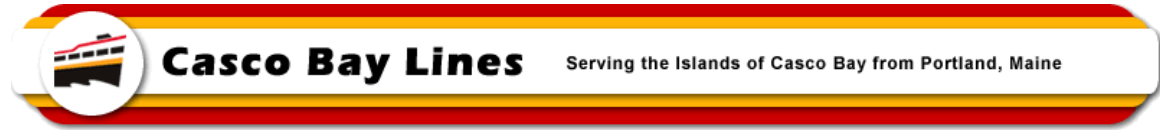


5143 - Installing Deck Guards

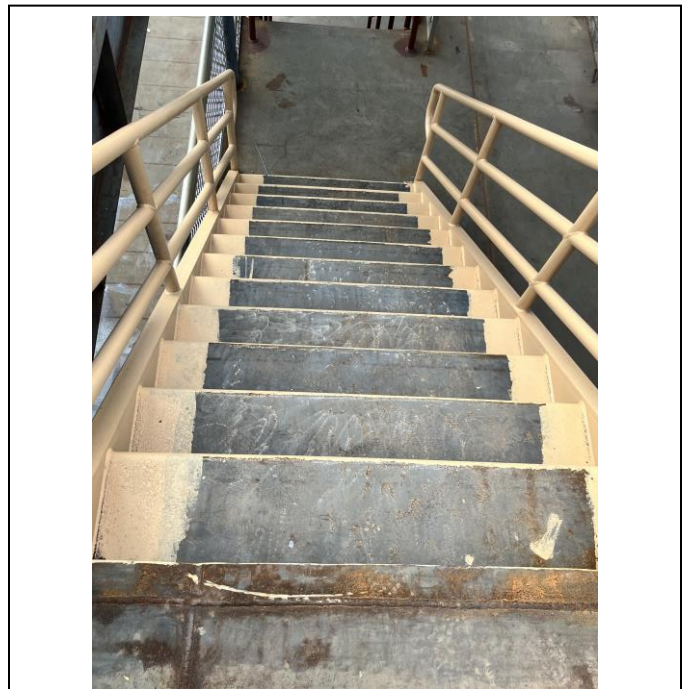


5144 - Installing Deck Guards

MEMO



5142 – Window Openings being Prepared for Windows



5145 – Preparing Stairs for Non-Skid Coating

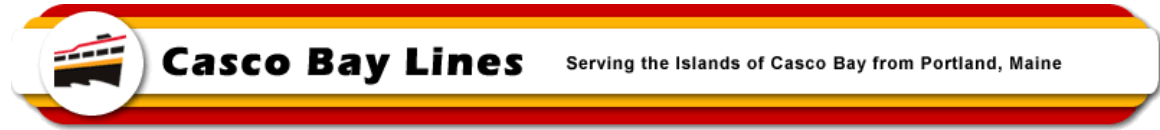


5151 – Starboard Side with Guards Installed and Windows Prepared

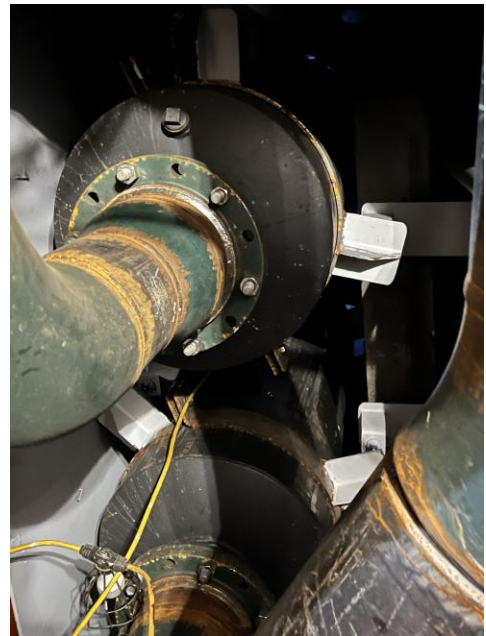


5152 – Paint Coating in Engine Room

MEMO



5155 - Paint Coating in Engine Room



5156 – Exhaust Piping going into Exhaust Silencers

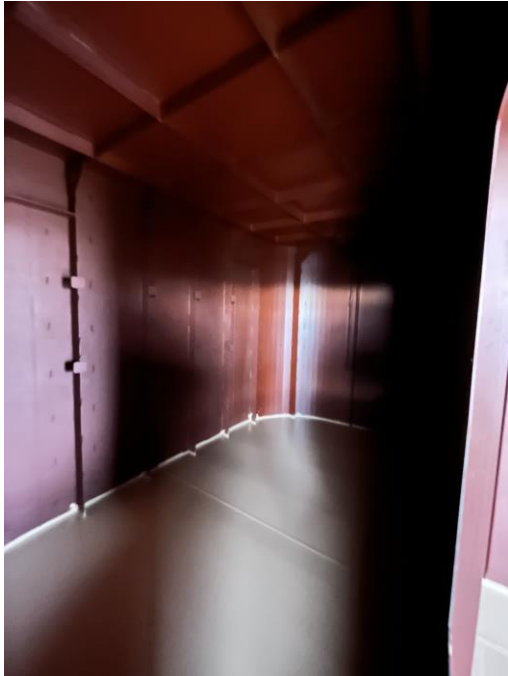


5159 – Starting to Paint Pilot House



5160 – Paint Applied in Crew Locker Room

MEMO



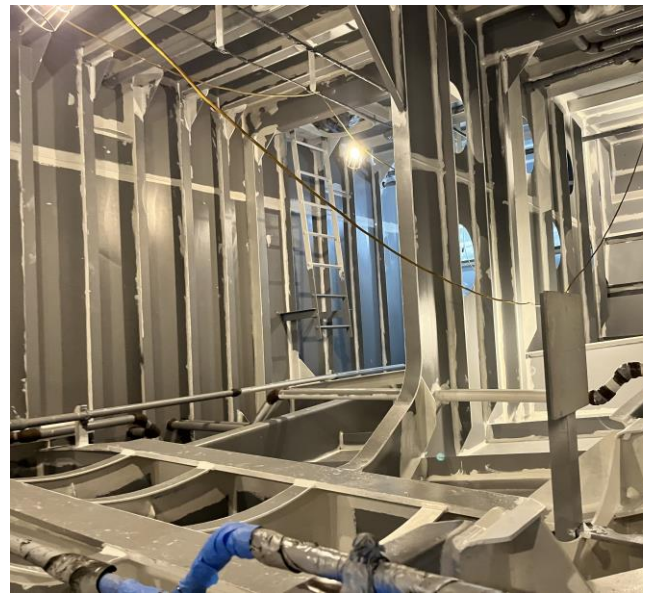
5161 – Paint inside the Electronics Room



5162 – Painting Inside of Pilot House

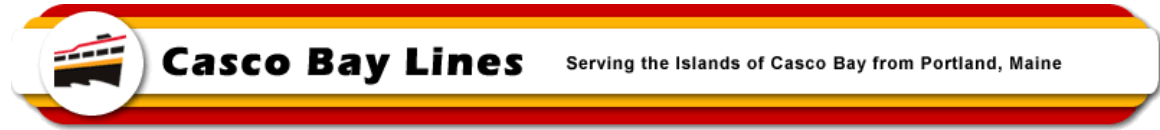


5163 - Painting Inside of Pilot House



5164 – Painting Inside Propulsion Motor Void Room

MEMO



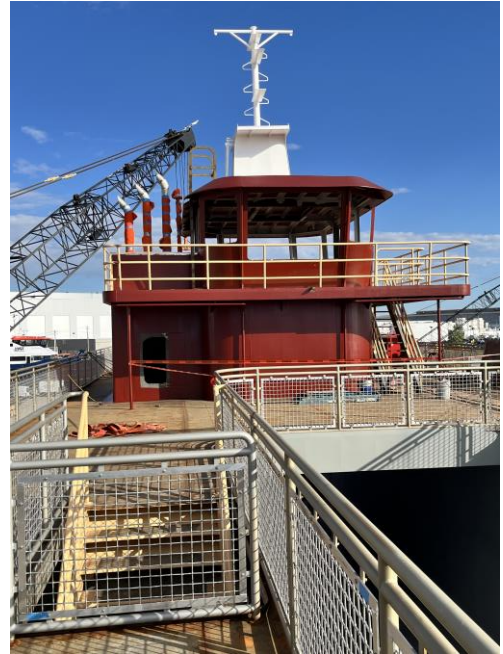
5167 – Heat Shield being made ready for installation



5168 - Heat Shield being made ready for installation

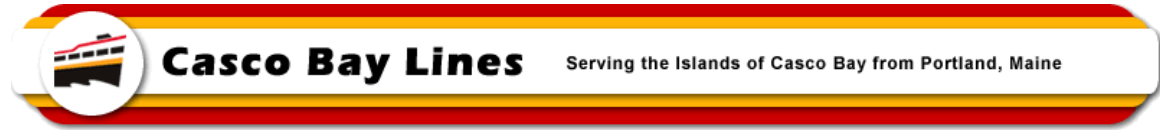


5170 – PH and Electrical Equip Room and Crew Locker Painted



5172 - PH and Electrical Equip Room and Crew Locker Painted

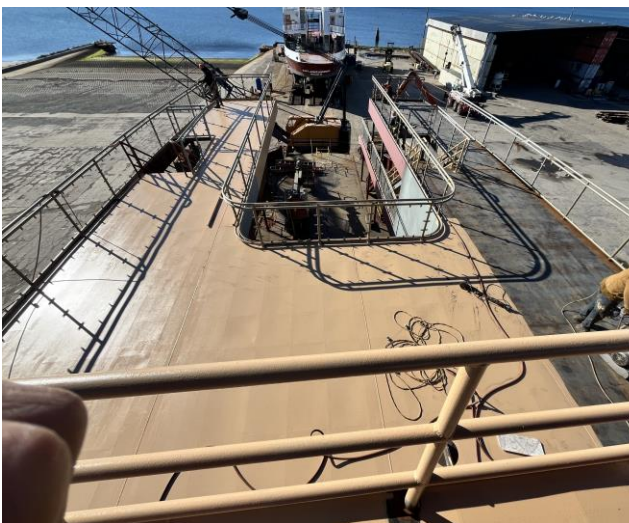
MEMO



5173 – Rudder Post Area in Lazarette



5174 - Rudder Post Area in Lazarette

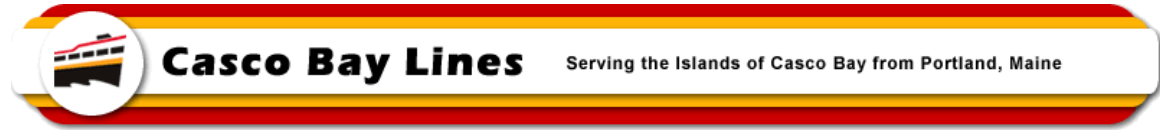


5177 – Painting a portion of 02 Deck



5242 - Painting a portion of 02 Deck

MEMO



5179 – Equipment Foundation Framing being Assembled



5182 - Equipment Foundation Framing being Assembled

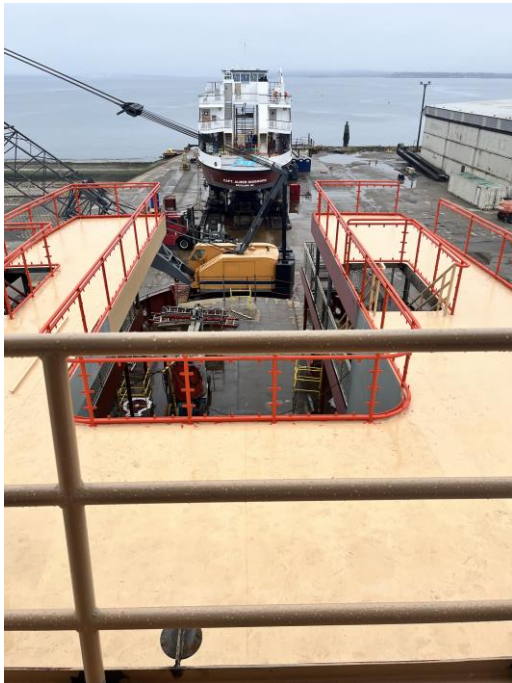


5183 - Equipment Foundation Framing being Assembled



5185 - Equipment Foundation Framing being Assembled

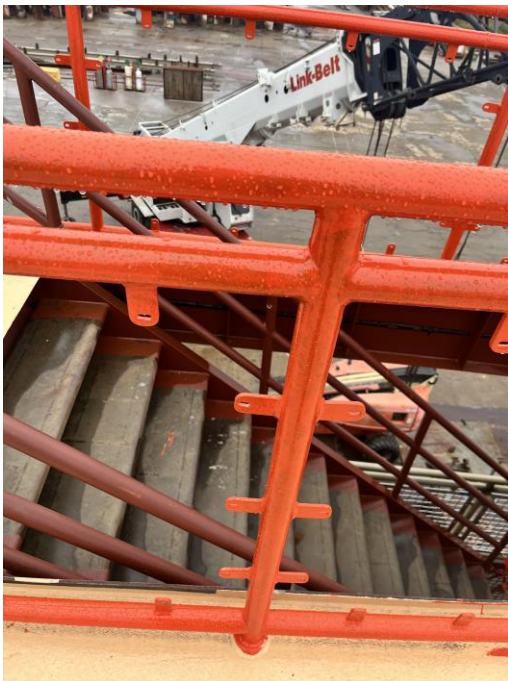
MEMO



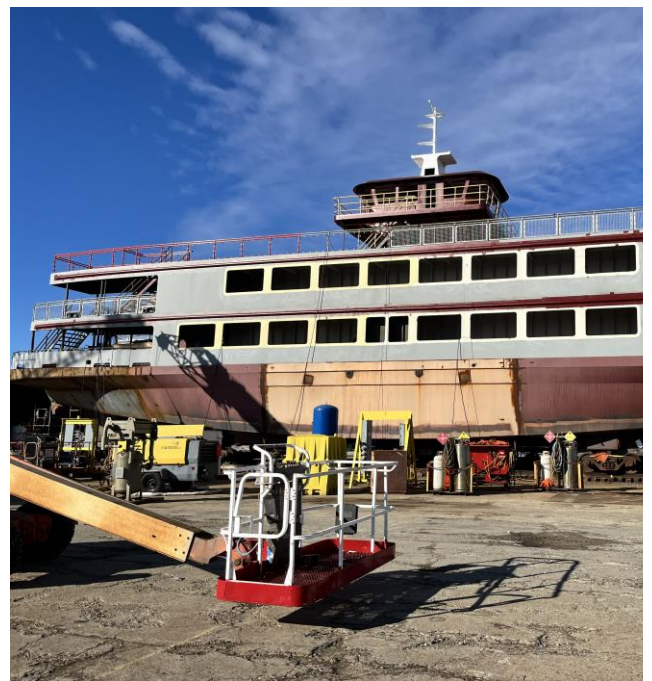
5192 – Forward 02 Deck Painted



5193 – PH Partially Painted

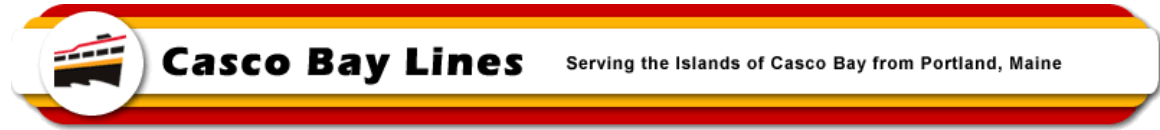


5194 – Handrails being Painted

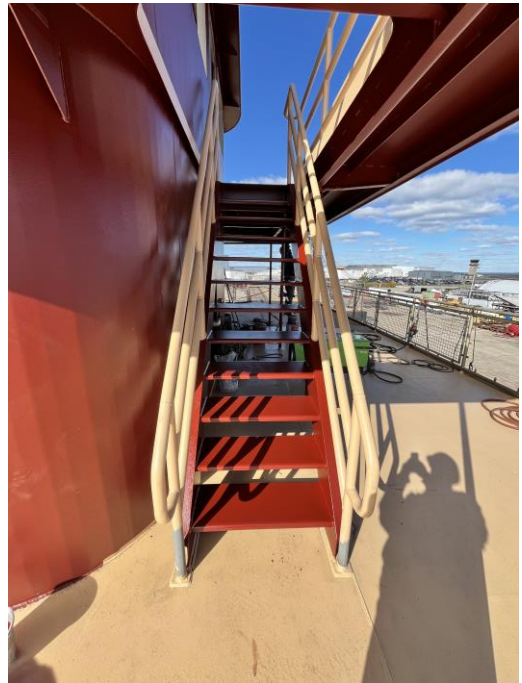


5202 – Guards on Port Side Primed

MEMO



5214 – Painting PH Structure



5215 – Stairs to PH with Paint

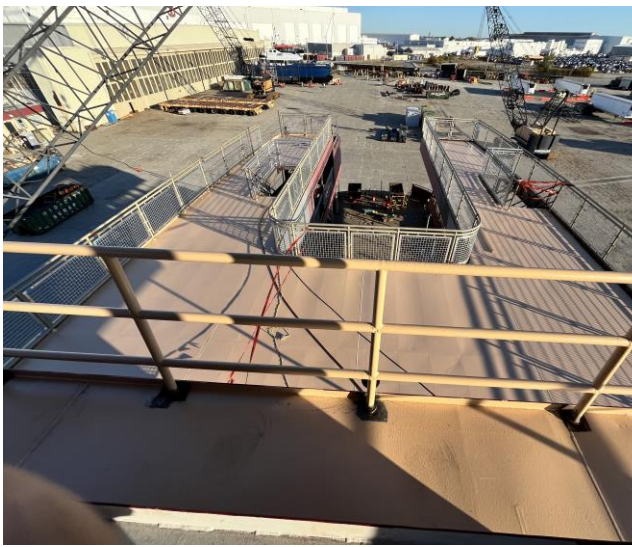
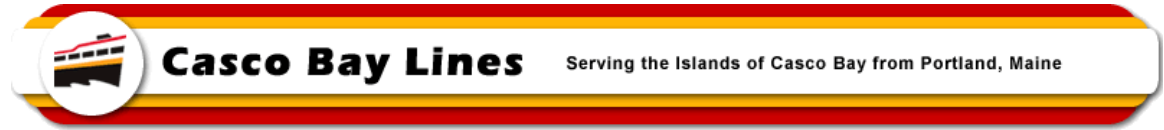


5224 – Battery Rack for Battery Modules

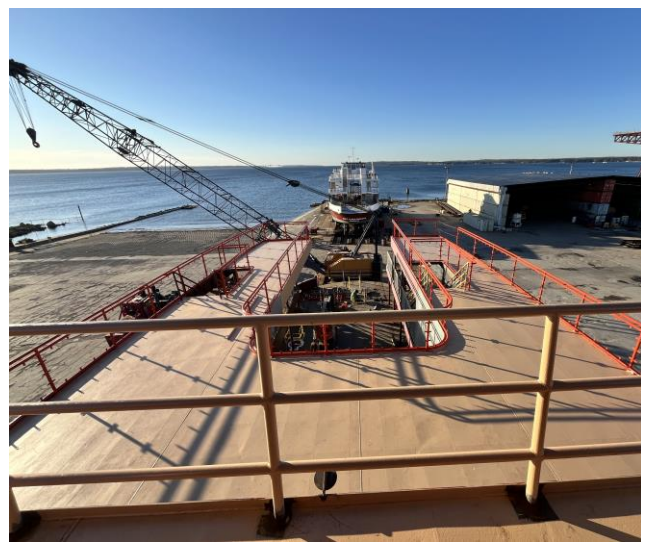


5225 - Battery Rack for Battery Modules

MEMO



5226 – Aft 02 Deck Painted



5227 – Forward 02 Deck Painted

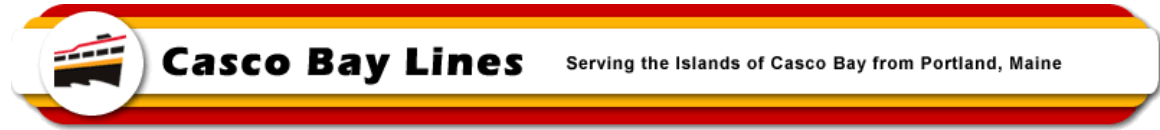


5228 – Equipment Foundation Framing Components



5230 - Equipment Foundation Framing Components

MEMO



5233 – Part of PEMS Switchboard



5234 – Propulsion Motor Cabinet

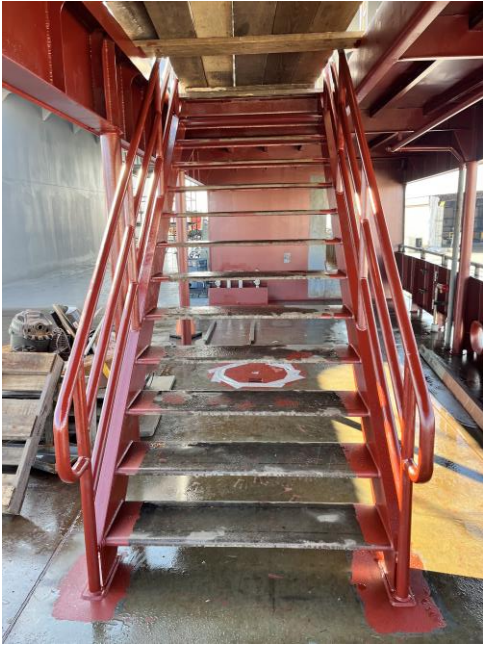
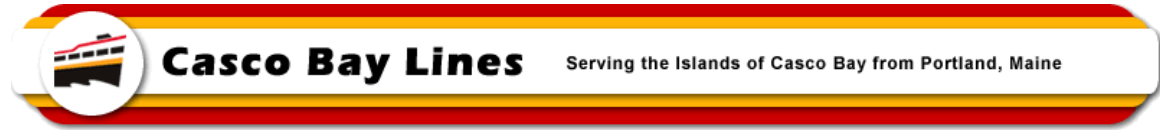


5237 – Installing Foundation Framing

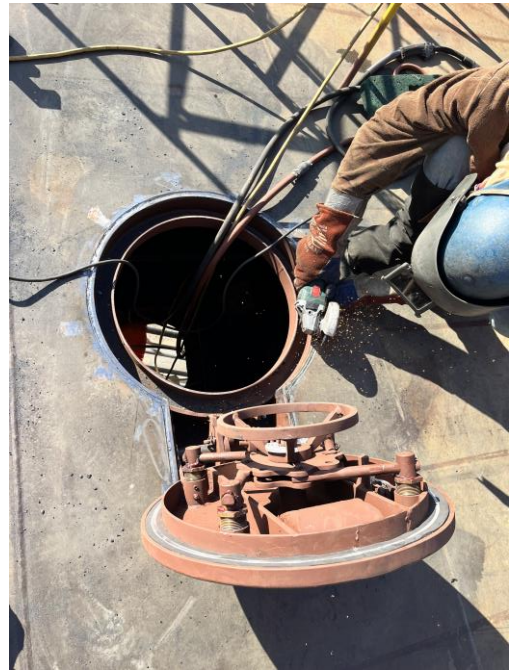


5238 – Switchboard Room Foundation Framing

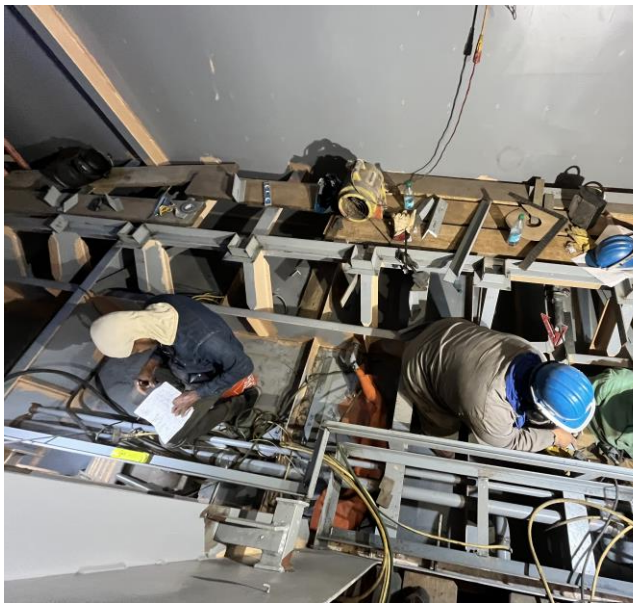
MEMO



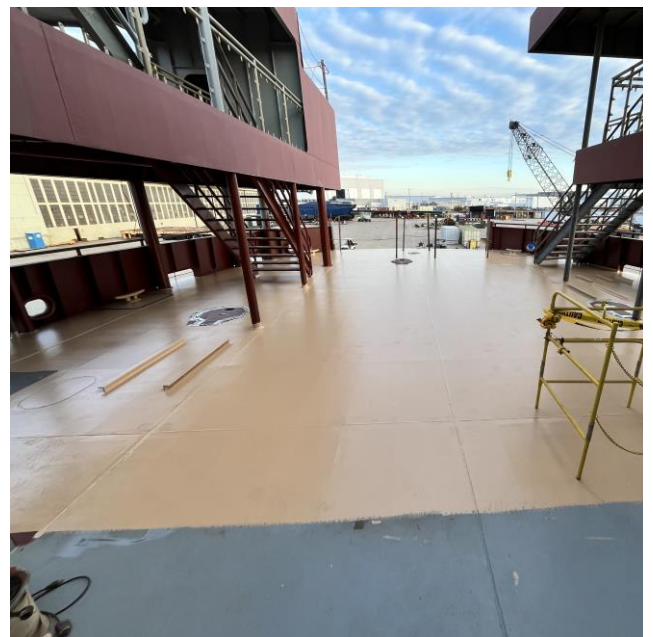
5239 – Partially Painted Stairs from Main Deck to 01 Deck



5240 – Working on Manhole Opening

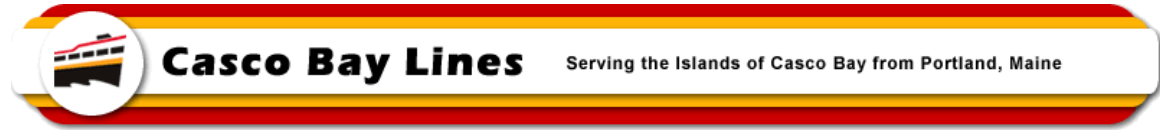


5243 – Installing Piping Around Foundation Framing



5249 – Partially Painted Maine Deck

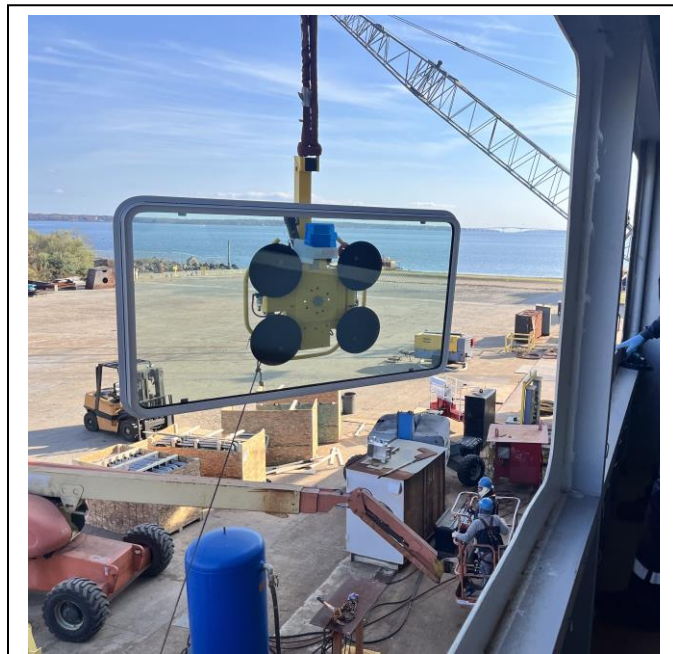
MEMO



5250 – Windows for Battery Steele



5252 – Window Gripper for Installation

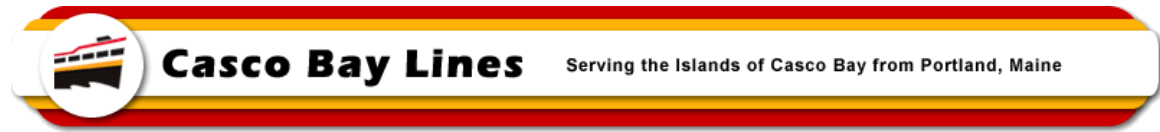


5255 – Installing a Widow

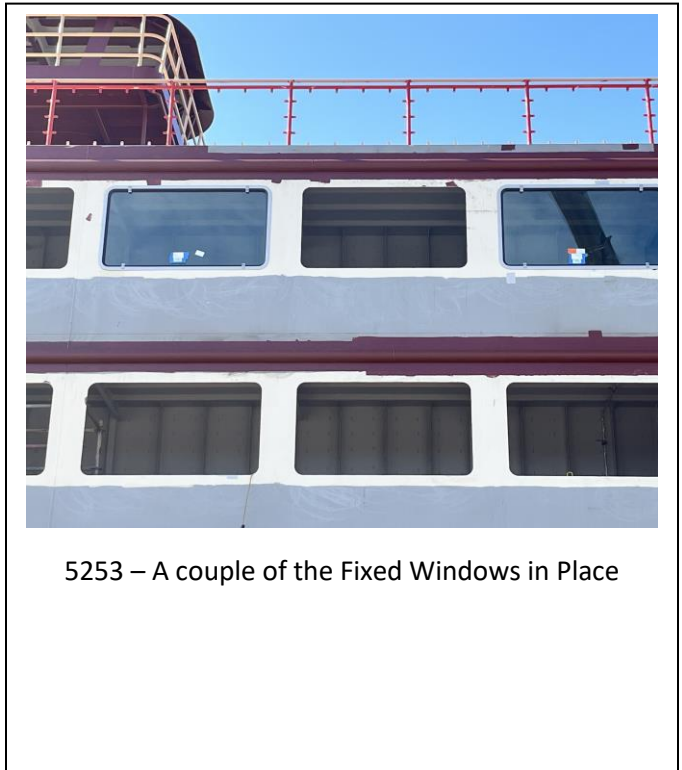


5256 - Installing a Widow

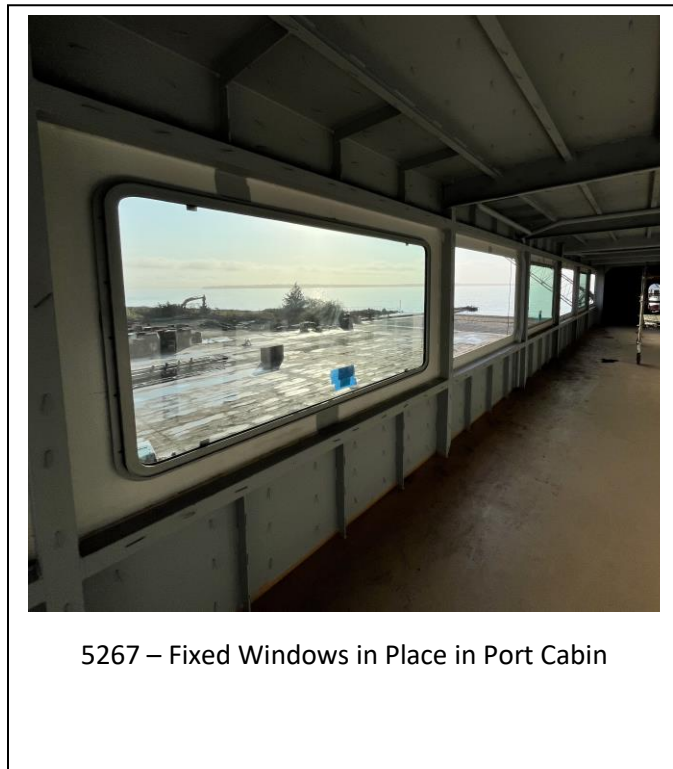
MEMO



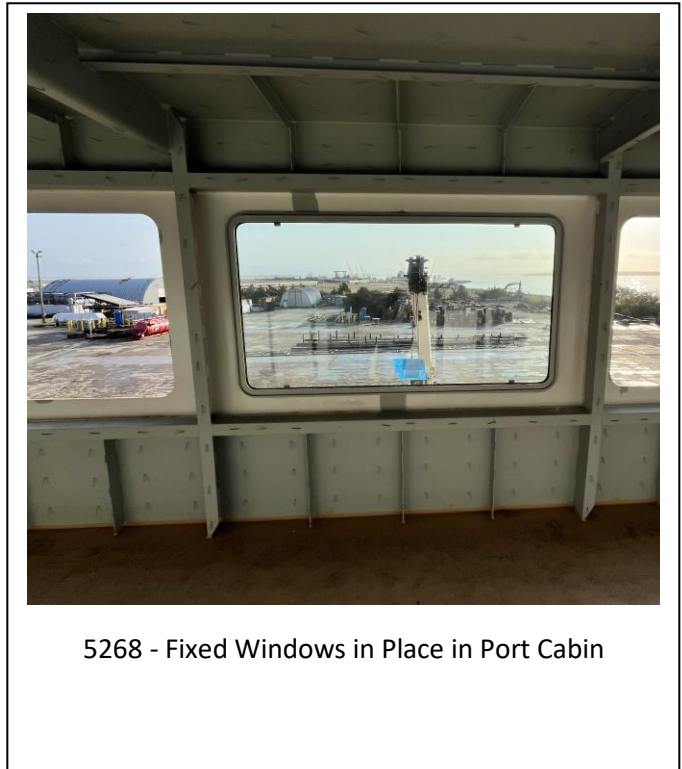
5257 - Installing a Window



5253 – A couple of the Fixed Windows in Place

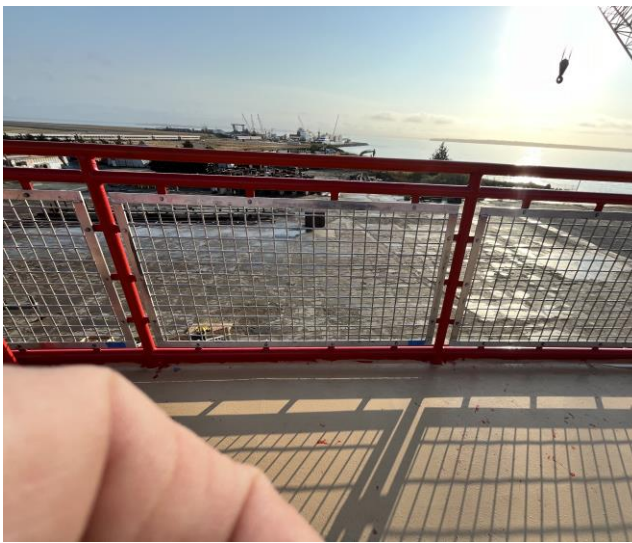
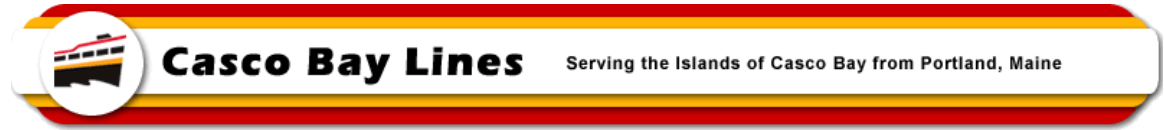


5267 – Fixed Windows in Place in Port Cabin



5268 - Fixed Windows in Place in Port Cabin

MEMO



5270 – Handrails Installed on 02 Deck with Screen Sections in.



5271 - Handrails Installed on 02 Deck with Screen Sections in.

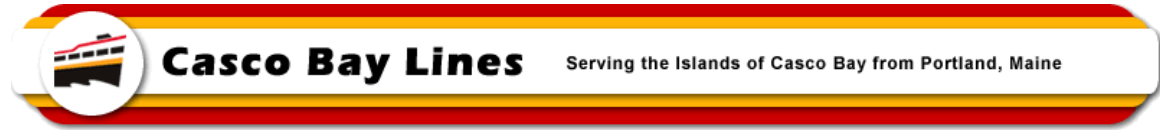


5297 – Generator Bay in the Engine Room



5300 – Switchboard Room Foundation Framing In, Working on Floor Grating Framing

MEMO



5302 – Insulation Installed



5303 - Insulation Installed

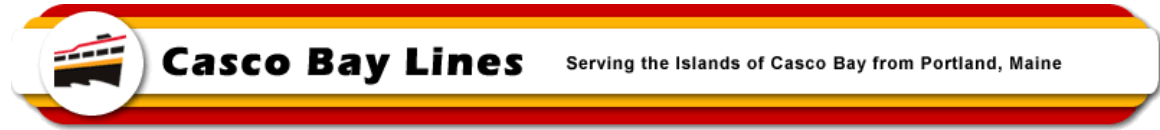


5306 – Some of the Operable Windows Installed in Port 01 Cabin



5307 - Some of the Operable Windows Installed in Port 01 Cabin

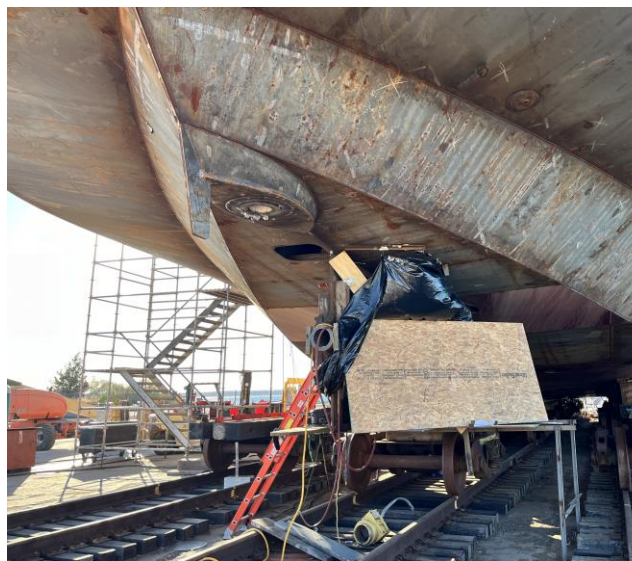
MEMO



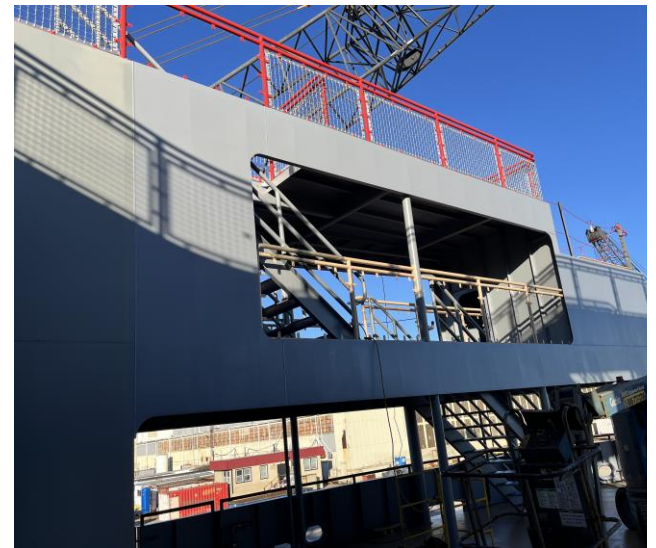
5308 - Some of the Operable Windows Installed in Port 01 Cabin



5335 – Some of the Windows in on Starboard Side 01 Cabin

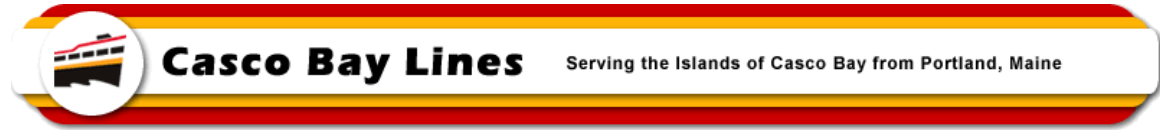


5336 – Welding on Skag Closure Plate

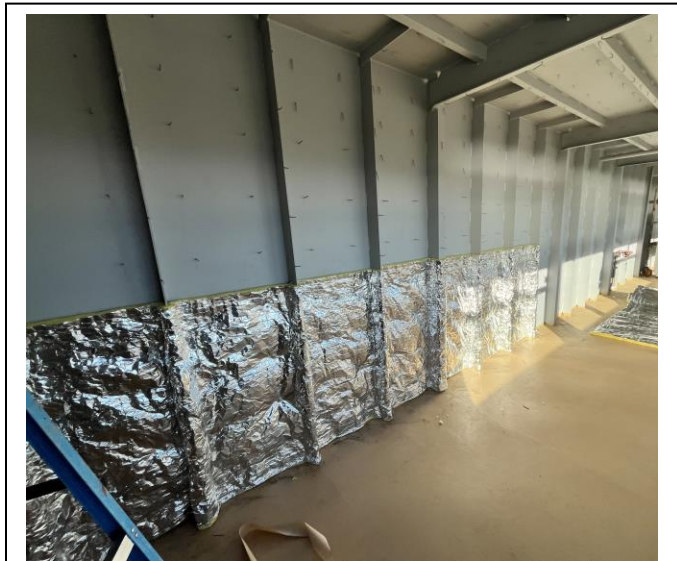


5339 – Painting Starboard Aft in Charger Socket Area

MEMO



5341 – Insulating a Port Cabin after Window Installation



5342 - Insulating a Port Cabin after Window Installation

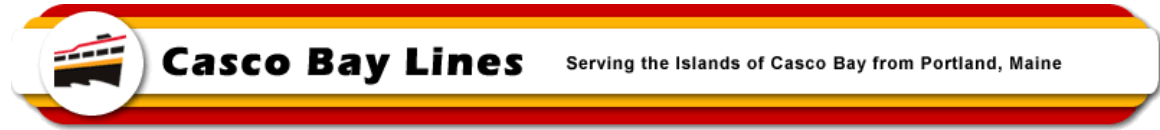


5343 - Insulating a Port Cabin after Window Installation



5344 – Windows Installed on Main Deck Starboard Cabin

MEMO



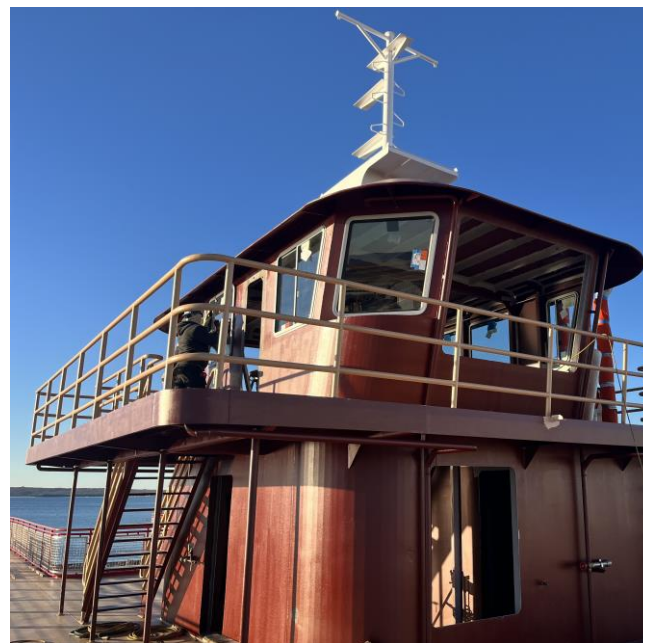
5356 – Installing Windows in PH



5357 – Insulating Starboard Main Deck Cabin

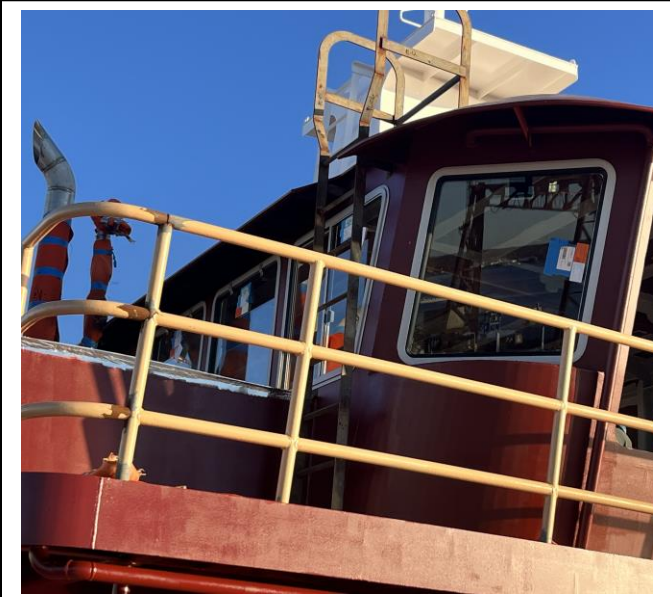


5358 – Windows Installed in Starboard 01 Deck Cabin



5359 – Installing Windows in PH

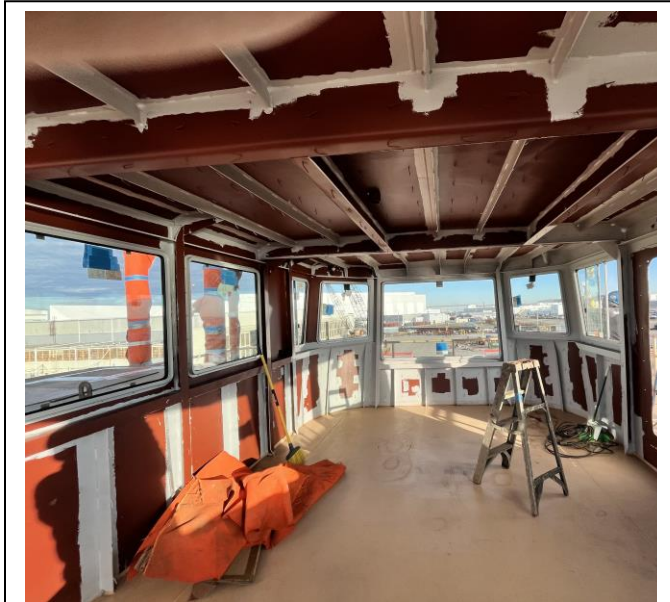
MEMO



5360 – Installing PH Windows



5361 – PH Console Mock Up for Review with Captains

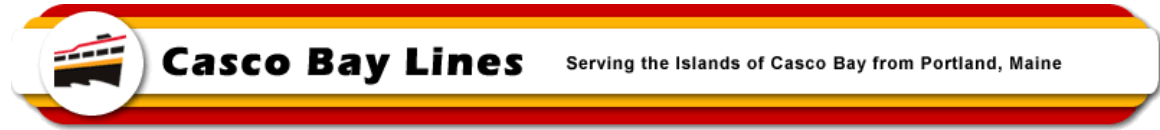


5371 – PH with Windows in



5372 – PH with Windows In

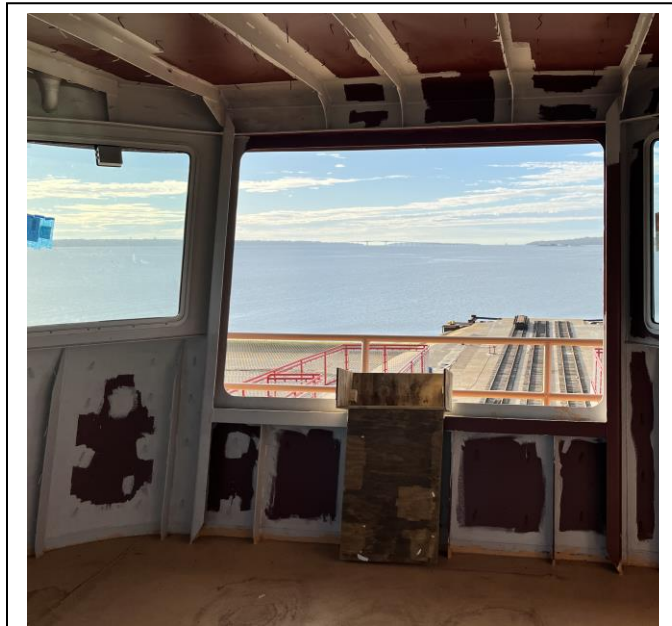
MEMO



5373 – PH with Windows Installed



5374 - PH with Windows Installed



5376 – PH with Mock-Up Console Being Installed



5377 – PH with Windows – Still Need Wipers Installed

MEMO



2727 – Container that Ferry Charger Arrives In



2731 – Preparing to Lift Container onto Barge



2740 – Inside Container with Charger arm in Wooden Cradle for Shipping



2744 – Parts crated for use in Installation

MEMO



2746 – Opening Crate with Charger Pedestal



2747 – Buss Bar Side of Pedestal Base

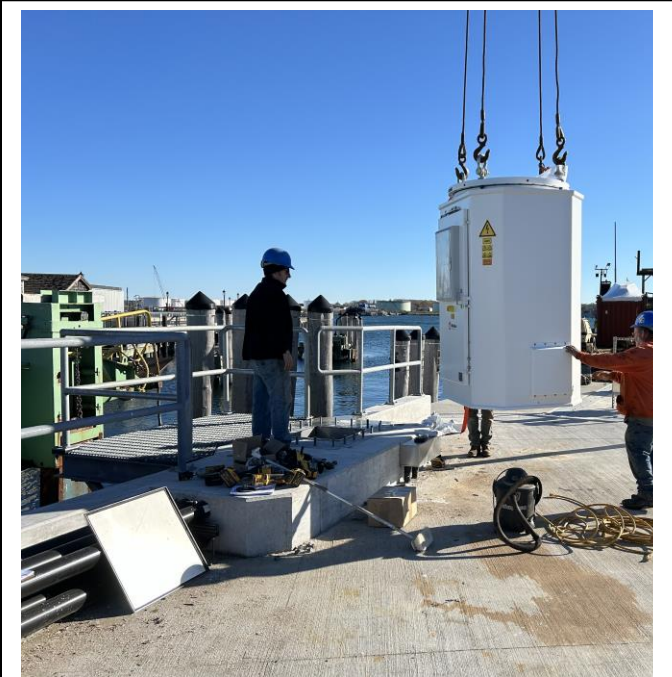


2749 – Electronics Side of Pedestal Base



2751 – Sensor and stops on Pedestal base Ring

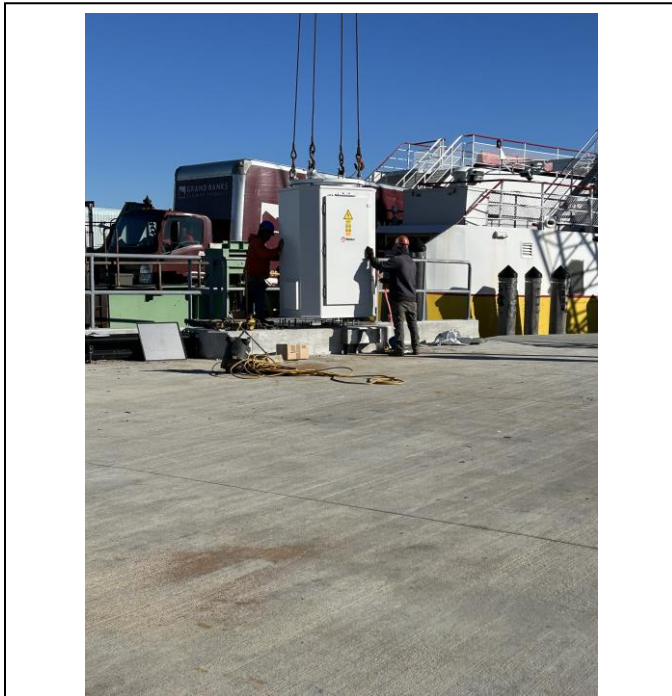
MEMO



2753 – Setting Pedestal Base on Pier Foundation



2754 - Setting Pedestal Base on Pier Foundation

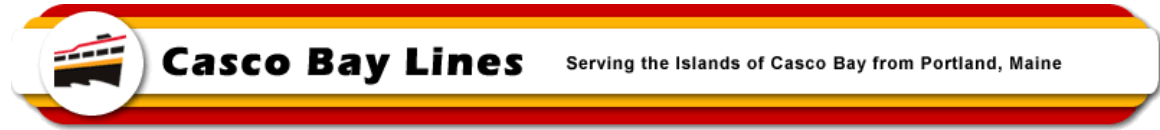


2756 - Setting Pedestal Base on Pier Foundation



2759 - Setting Pedestal Base on Pier Foundation

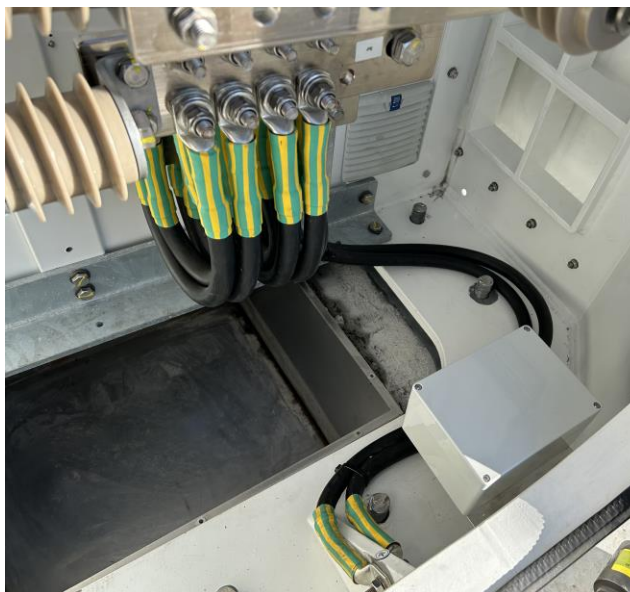
MEMO



2761 – Aligning Bolts with holes in Pedestal



2762 - Aligning Bolts with holes in Pedestal

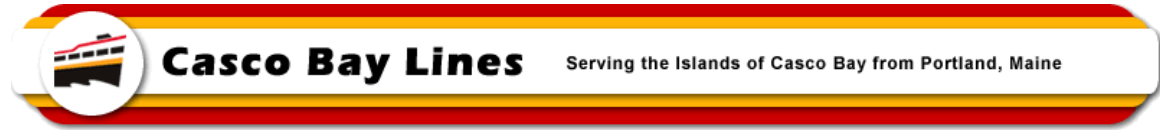


2763 - Aligning Bolts with holes in Pedestal

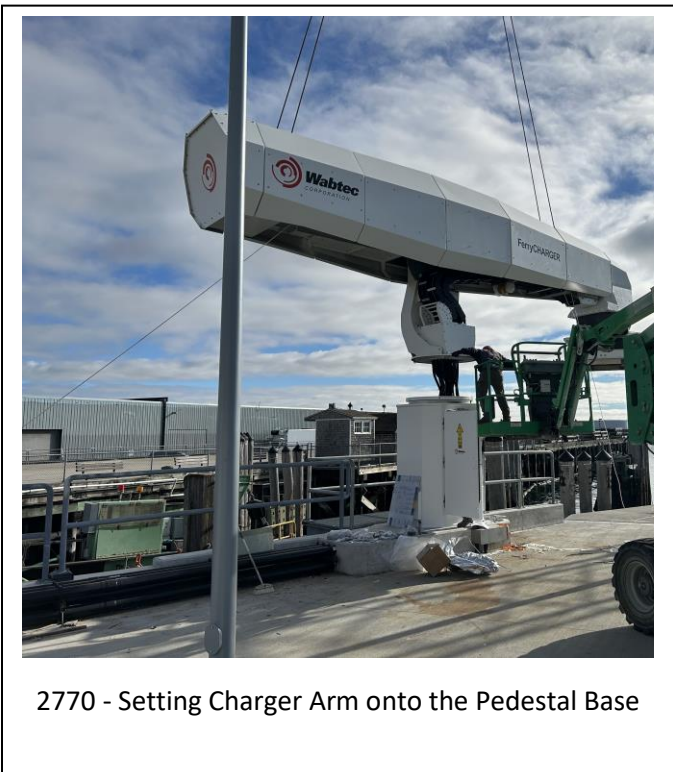


2766 - Aligning Bolts with holes in Pedestal

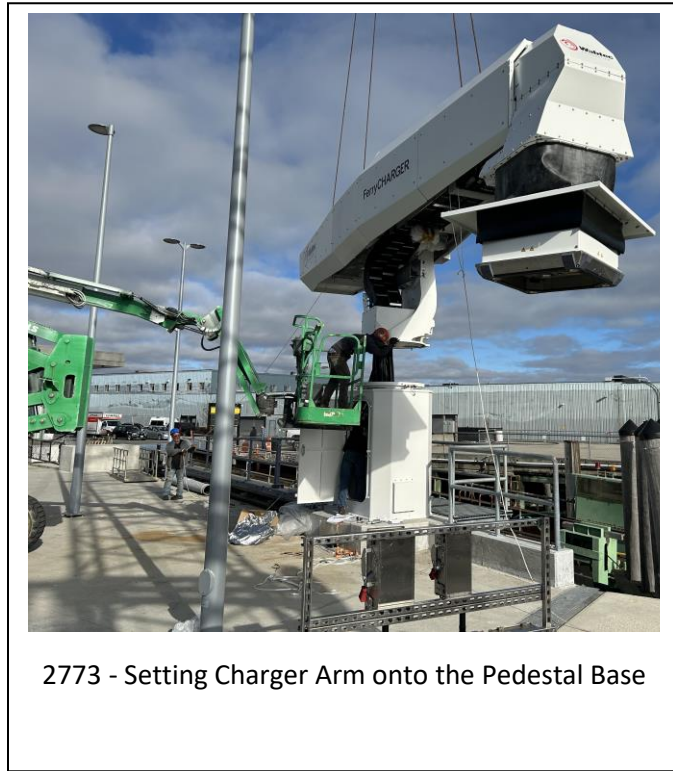
MEMO



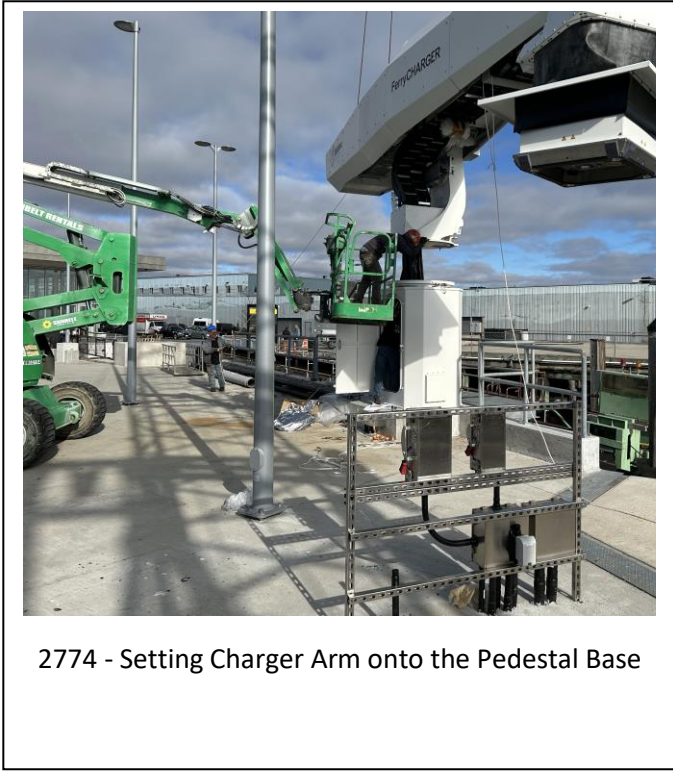
2769 – Setting Charger Arm onto the Pedestal Base



2770 - Setting Charger Arm onto the Pedestal Base

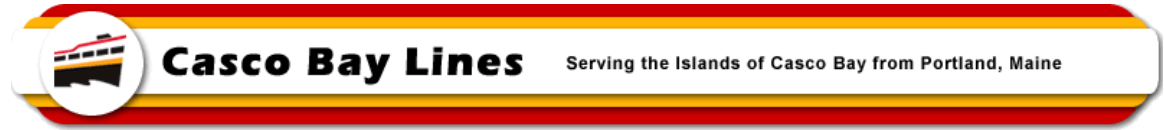


2773 - Setting Charger Arm onto the Pedestal Base



2774 - Setting Charger Arm onto the Pedestal Base

MEMO



2775 – Wiring from Arm to Pedestal Base on Buss Bar Side



2776 - Wiring from Arm to Pedestal Base on Buss Bar Side

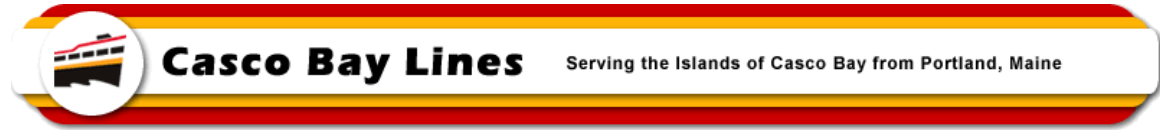


2777 - Wiring from Arm to Pedestal Base on Buss Bar Side



2784 - Wiring from Arm to Pedestal Base on Buss Bar Side

MEMO



2780 – Hardware for Bolting Arm to Base



2786 – Bolting Arm to Base

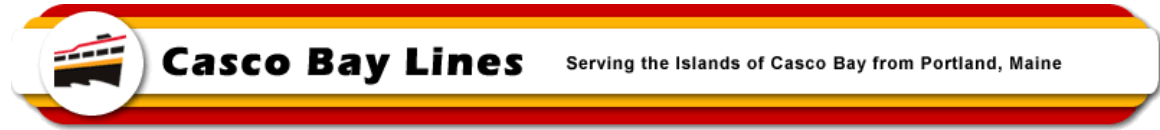


2788 – Bolting Arm to Base



2790 – Bolting Arm to Base

MEMO



2792 – Charger in Place, Securing Covers



2795 – Charger in Place